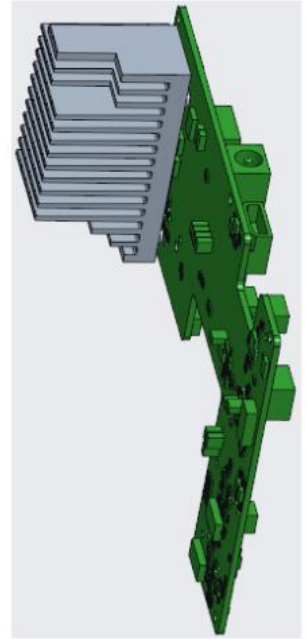
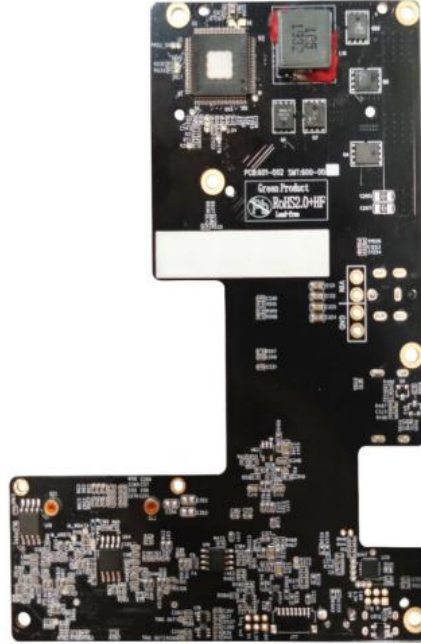
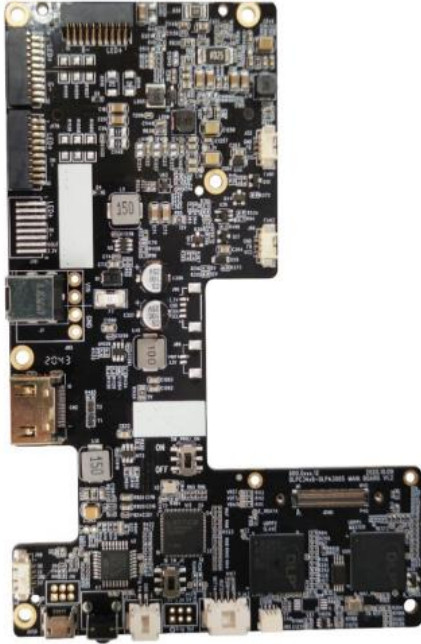




0P47 1080P

DLPC3479-DLPA3005 MAIN BOARD



适用光机型号:	M10,M11,M16B,M26 系列光机
主控芯片:	DLPC3479
LED 驱动芯片:	DLPA3005
DMD 型号:	DLP4710LC
分辨率:	0P47 1080P
接口:	LED R/G/B 接口, MCU 串口, 触发接口, I2C 接口, 风扇接口, DMD 接口, 电源接口
工作温度:	0°C~+45°C
电源:	12V/10A(适配 AC 100~240V, 50/60Hz)
标准配件:	LED 线材, 触发线, 电源线, FPC 压片套件 (含泡棉+螺丝)
选配:	USB 转 I2C 工具套件 (含 3Pin 线材, 选配 USB 转 Micro 5P 线材)
备注:	此款驱动板已装配散热片